

Century Towers, San Jose

1729 North 1st Street, San Jose, CA



±2,786 SF of Ground Floor Retail Space Available in New Development (Divisible to ±1,400 SF)

- ◆ Brand New Luxury Apartment Community with 376 Apartments
- ◆ High-Identity Retail Space with Great Street Exposure and Storefronts
- ◆ Available Now
- ◆ Very High Daytime Population

◆ Demographics

	<u>1 Mile</u>	<u>3 Miles</u>	<u>5 Miles</u>
Population	5,575	160,828	575,892
Average HH Income	\$96,617	\$97,199	\$93,147
Daytime Population	34,486	228,495	444,940

Steven Doll Associate 408.982.8426 sdoll@newmarkccarey.com CA RE License #01995836

Matt Sweeney Managing Director 408.987.4119 msweeney@newmarkccarey.com CA RE License #01746896

**Newmark
Cornish & Carey**

2804 Mission College Blvd., Suite 120, Santa Clara, CA 95054 www.newmarkccareyretail.com

Retail

Procuring broker shall only be entitled to a commission, calculated in accordance with the rates approved by our principal only if such procuring broker executes a brokerage agreement acceptable to us and our principal and the conditions as set forth in the brokerage agreement are fully and unconditionally satisfied. Although all information furnished regarding property for sale, rental, or financing is from sources deemed reliable, such information has not been verified and no express representation is made nor is any to be implied as to the accuracy thereof and it is submitted subject to errors, omissions, change of price, rental or other conditions, prior sale, lease or financing, or withdrawal without notice and to any special conditions imposed by our principal.

16-1178*11/16

Century Towers, San Jose

1729 North 1st Street, San Jose, CA



Steven Doll Associate 408.982.8426 sdoll@newmarkccarey.com CA RE License #01995836

Matt Sweeney Managing Director 408.987.4119 msweeney@newmarkccarey.com CA RE License #01746896

**Newmark
Cornish & Carey**

2804 Mission College Blvd., Suite 120, Santa Clara, CA 95054 www.newmarkccareyretail.com

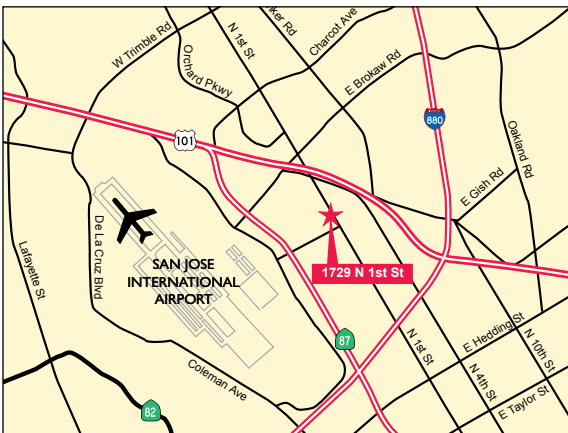
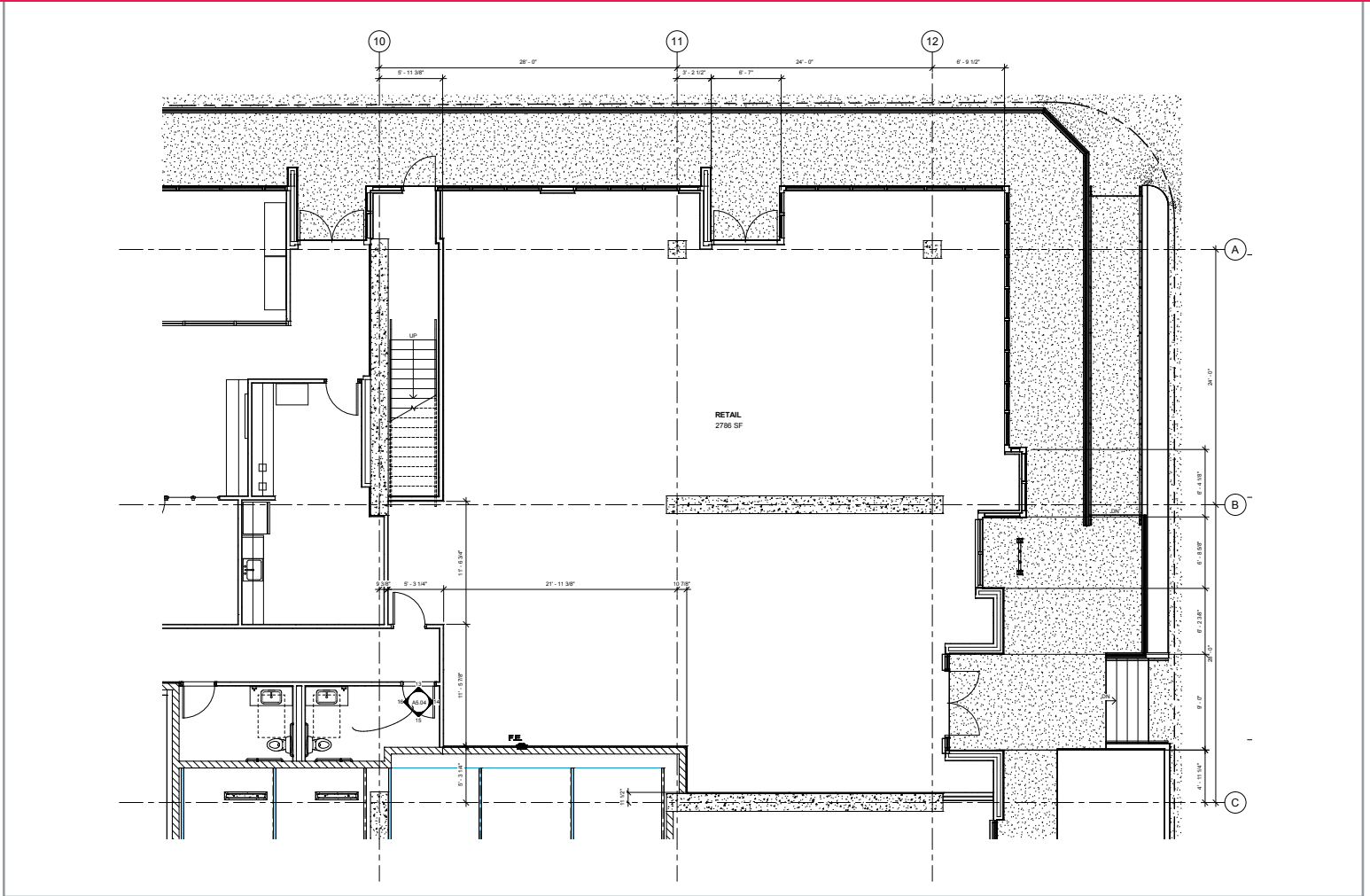
Retail

Procuring broker shall only be entitled to a commission, calculated in accordance with the rates approved by our principal only if such procuring broker executes a brokerage agreement acceptable to us and our principal and the conditions as set forth in the brokerage agreement are fully and unconditionally satisfied. Although all information furnished regarding property for sale, rental, or financing is from sources deemed reliable, such information has not been verified and no express representation is made nor is any to be implied as to the accuracy thereof and it is submitted subject to errors, omissions, change of price, rental or other conditions, prior sale, lease or financing, or withdrawal without notice and to any special conditions imposed by our principal.

16-1178-11/16

Century Towers, San Jose

1729 North 1st Street, San Jose, CA



Steven Doll Associate 408.982.8426 sdoll@newmarkccarey.com CA RE License #01995836

Matt Sweeney Managing Director 408.987.4119 msweeney@newmarkccarey.com CA RE License #01746896

Newmark Cornish & Carey 2804 Mission College Blvd., Suite 120, Santa Clara, CA 95054 www.newmarkccareyretail.com

Retail

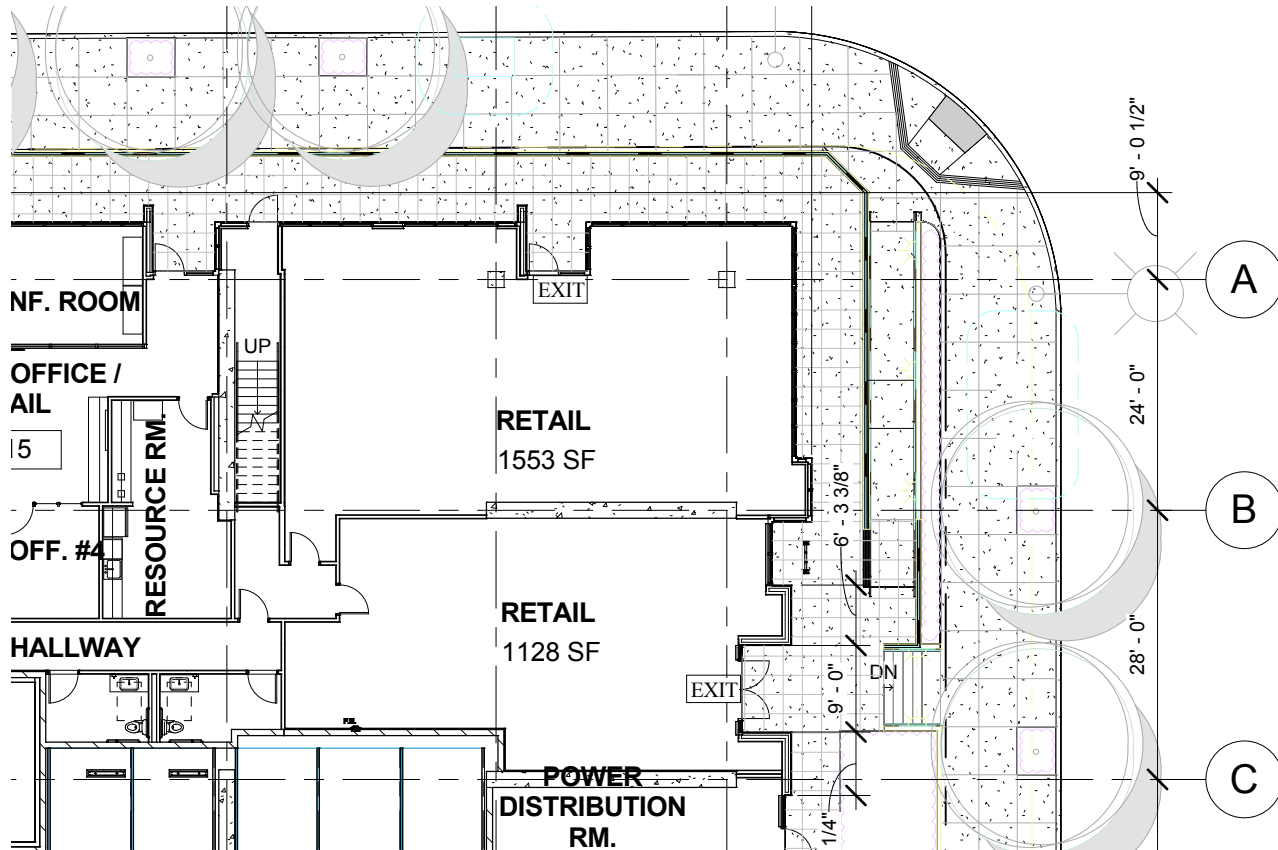
Procuring broker shall only be entitled to a commission, calculated in accordance with the rates approved by our principal only if such procuring broker executes a brokerage agreement acceptable to us and our principal and the conditions as set forth in the brokerage agreement are fully and unconditionally satisfied. Although all information furnished regarding property for sale, rental, or financing is from sources deemed reliable, such information has not been verified and no express representation is made nor is any to be implied as to the accuracy thereof and it is submitted subject to errors, omissions, change of price, rental or other conditions, prior sale, lease or financing, or withdrawal without notice and to any special conditions imposed by our principal.

Century Towers, San Jose

1729 North 1st Street, San Jose, CA



Potential Demising Pan



Steven Doll Associate 408.982.8426 sdoll@newmarkccarey.com CA RE License #01995836

Matt Sweeney Managing Director 408.987.4119 msweeney@newmarkccarey.com CA RE License #01746896

**Newmark
Cornish & Carey**

2804 Mission College Blvd., Suite 120, Santa Clara, CA 95054 www.newmarkccareyretail.com

Retail

Procuring broker shall only be entitled to a commission, calculated in accordance with the rates approved by our principal only if such procuring broker executes a brokerage agreement acceptable to us and our principal and the conditions as set forth in the brokerage agreement are fully and unconditionally satisfied. Although all information furnished regarding property for sale, rental, or financing is from sources deemed reliable, such information has not been verified and no express representation is made nor is any to be implied as to the accuracy thereof and it is submitted subject to errors, omissions, change of price, rental or other conditions, prior sale, lease or financing, or withdrawal without notice and to any special conditions imposed by our principal.